

# ARGO

WE MANUFACTURE PASSION

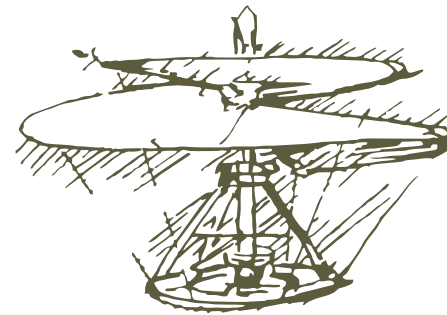




It all begins with an **idea**

"Once you have had a taste of flight,  
you will always walk on the ground  
With your eyes fixed on the sky,  
because that's where you've been  
and that's where you'll always  
you will desire to return"

Leonardo da Vinci



**WE MANUFACTURE PASSION**





The Autogyro, or Gyroplane, was invented to avoid the dangerous effects of stall and corkscrewing that aircraft are subject to. The Spaniard Juan de la Cierva, inventor and first designer of the Gyroplane, made the inaugural flight of the C4 model in 1923. Autogyro, Gyro, Gyrocopter, and autogyro are terms for flying devices in which the rotor is not driven by an engine, but moves as a result of autorotation.

Autorotation is a physical phenomenon that sets the rotor in motion due to flowing air currents.

Like a spinning wing, the rotor generates the lifting force needed to lift the aircraft.

Nature suggested a solution so perfect in its simplicity.

A similar mechanism works in the case of a spinning maple seed falling from a tree.





## Live life with passion

Embrace life with boundless passion! Picture this: a perfect day unfolds as you stroll into your garage and there it stands your very own rotorcraft beckoning to you.

You hop in and lift off, enveloped in a sense of security and ease. Below, vibrant blue skies stretch out, adorned with picturesque landscapes and winding roads like enchanting mazes.

Forget about traffic jams and radars; you soar above it all.

Your dream has come true, and in the blink of an eye, you find yourself at your destination.

And the best part?

Owning your own helicopter or gyrocopter is now within reach, priced like a top-notch car.

Take advantage of attractive financing options, and remember, the cost is fully tax-deductible.

Seize this opportunity without hesitation, because you deserve more





Our headquarters are located in Sobienie Szlacheckie at the EPSJ airport located next to the golf course.

This is the place where every flying enthusiast will find something for themselves. Here we present Helicopters and Gyroplanes of the best brands. We are Exclusive Importer of EDGE Performance aircraft engines and other aviation accessories.

On the shelves of our store you will find essential for every Pilot accessories and gadgets.

You can reach us by landing at the airport adjacent to the factory or on our helipad. The Gyroplane and Helicopter Service and Pilot School is also located here.





# Three People on board





## Passion drives **perfection**

At our company, nearly all of us are pilots.

Our wealth of experiences, coupled with our shared vision and unwavering passion for flying, ensure that the aircraft we design are hailed as the safest,

most reliable, and easiest to fly among all available on the market. Each day, we soar above limits, pushing boundaries, and crafting innovations that ignite the thrill of the skies.

Our relentless dedication to excellence propels us towards new horizons, where the exhilaration of flight knows no bounds.

Join us on this breathtaking journey as we redefine the skies together!

**MADE BY PILOTS FOR PILOTS**



## Why **are we** the ones to do it?

Why are we the ones to do it? Because we've clocked in countless hours soaring safely through the skies testing, training, simply reveling in flight. Our base of operations is right at the EPSJ airport, where we meticulously construct and put our aircraft to the test. You can handpick the model that suits you best, from testing it to purchasing it, from learning to fly it to maintaining it our all-encompassing services cater to your every aviation need.

Immerse yourself in a unique atmosphere, surrounded by individuals for whom flying is not merely a passion but a way of life. Whether you wish to part ways with your aircraft or bring it back to us, it's all conveniently located under one roof! **So, why wait?**

Embark on this exhilarating journey with us.

Discover the world of aviation through our specialized services.

We eagerly await your presence. Give our services a try!

Warm regards,

Krzysztof Wronowski

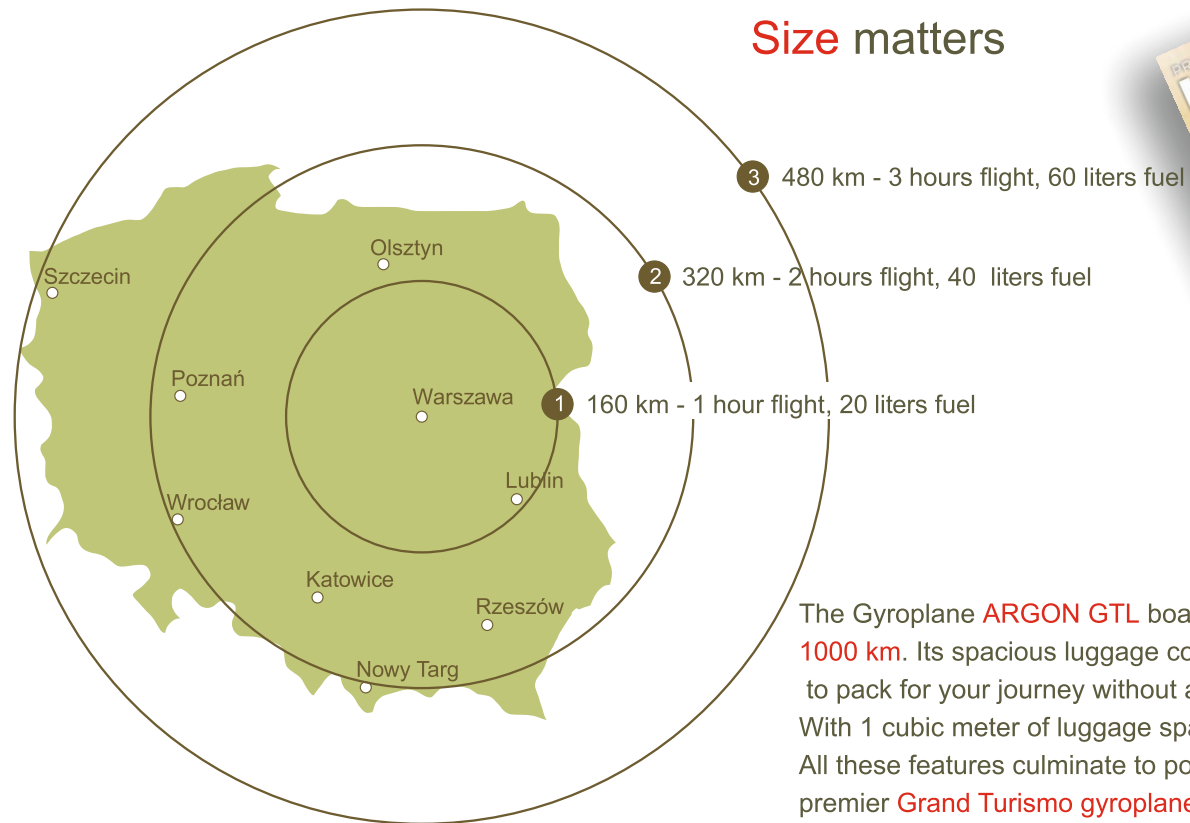
CEO"

# argon

ROTAX 160 HP



## Size matters



The Gyroplane **ARGON GTL** boasts an impressive range of nearly **1000 km**. Its spacious luggage compartment provides ample room to pack for your journey without any compromises. With 1 cubic meter of luggage space, it sets an exceptional standard. All these features culminate to position the ARGON GTL as the premier **Grand Turismo gyroplane** in its class.





Our Gyroplane has won many awards and accolades around the world.  
Its unique characteristics have been described in many reputable magazines.

## Perfect **production** process

The factory is located in Poland in Sobienie Szlacheckie near Warsaw at the EPSJ airport. The production process is regularly supervised and improved. This guarantees the highest quality and reliability of each machine.

Our **patent-protected** cabin is a unified carbon fiber body that incorporates controlled crush zones, offering unparalleled strength at minimal weight. This **state-of-the-art** technology mirrors the design principles of **Formula 1** racing cars, making it the most advanced and secure solution available.

The ARGON Gyroplanes are constantly being improved. We listen carefully to the suggestions of our customers. It is for them that we build our Gyroplanes, and it pays off.

There are dozens of Gyroplanes ARGON 915 Classic flying around the world and a couple the newest of ARGON GTL. At the moment we already offer the fifth generation of these rotorcrafts.

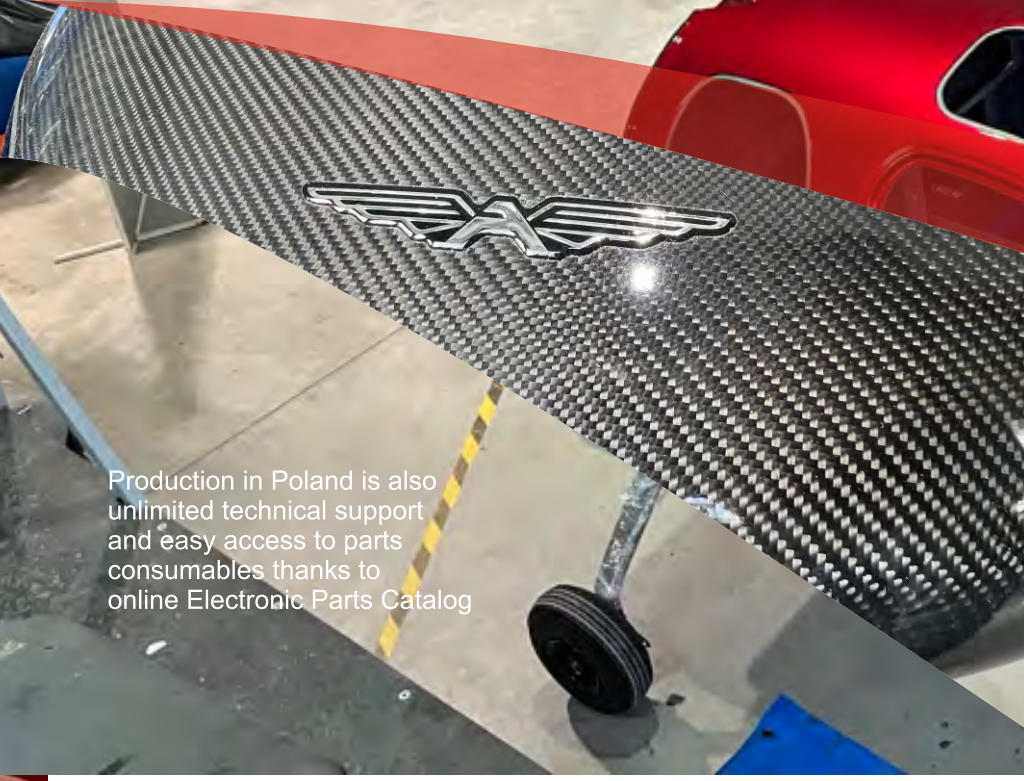
On sale there are still:

ARGON GTL Grand Turismo  
ARGON 915 iS Classic  
ARGON Sti Edge Performance



**Turn your dreams into reality**

within just 90 to 120 business days from placing an order and making an advance payment. Our online application enables you to monitor the construction progress of your machine, ensuring transparency and involvement in the process. Additionally, benefit from easy transport using a dedicated car trailer and swift preparation for flight upon delivery, making your aerial adventures more accessible than ever.



Production in Poland is also unlimited technical support and easy access to parts consumables thanks to online Electronic Parts Catalog



You don't need a hangar. After removing the rotor ARGON will fit in your garage.

## Usability in every field of operation

**VIP CARD** holders receive priority access to maintenance services, rentals, and training across all fields of operation. Enjoy exclusive advantages and seamless support tailored to meet your needs.



Gyroplanes are rotorcrafts with remarkable capabilities, blending aspects of different flying machines while avoiding the common drawbacks associated with them.

These Gyroplanes can be outfitted with laser and infrared cameras, ideal for observing and maintaining above-ground power lines efficiently.

The float-equipped version enables takeoff and landing on water, expanding the operational options of the Gyroplane.

Thanks to their inherent advantages, Gyroplanes find utility across various sectors, including military, fire departments, and police forces. Additionally, farmers utilize them for spraying tasks, while surveyors benefit from their precision for accurate measurements.



Manufaktura Lotnicza



**Security**

Landing possible without running engine - autorotation generates lift in all phases of flight giving you time to find landing places.



**Argon offer unparalleled flight smoothness** and stability, with minimal impact from turbulence. Remarkably, they are among the few vehicles that do not induce motion sickness, ensuring a comfortable and enjoyable flying experience.



**Unprecedented maneuverability** turn 180 degrees in a few seconds with a minimal radius.



**Featuring an exceptionally large and spacious cabin,** ARGON gyroplanes are designed to ensure every pilot feels comfortable and at ease. Additionally, ARGON offers the most luggage space, catering to diverse travel needs with ample room for belongings.



**Wide range of flight speeds** from 30 to 210 km/h



**Maximum** cabin glazing provides excellent and nothing unrestricted visibility



**Easy learning** from the beginning of learning to Pilot's license Only 30 hours of practice.



**Short takeoff and landing capabilities** provide the flexibility to operate from a wide range of existing airstrips, enhancing the versatility of ARGON gyroplanes.



**Resistance** to difficult weather conditions - ARGON can fly in any wind conditions when other aircraft are off limits.



**Economy**

In terms of economy, Argon gyrocopter runs on fuel efficiently. With a fuel consumption rate of approximately 18 liters per flight-hour at a speed of 180 km/h, this gyrocopter is tailored for cost-effective aerial travel. (One person on board) the Argon gyrocopter combines thrifty fuel usage with impressive speed, making each flight a smooth and budget-friendly experience.



**Easy transportation**

with a dedicated trailer. Quick preparation machine for flight - one person - 20 min

The ARGON gyroplanes boast numerous advantages, positioning them as frontrunners among aircraft. The safety factor of the Gyroplane ARGON is unparalleled compared to other aircraft types, highlighting its superior safety standards.

## Safety first

Safety is a top priority in the design of the Argon gyrocopters.

### Reliable and Robust design:

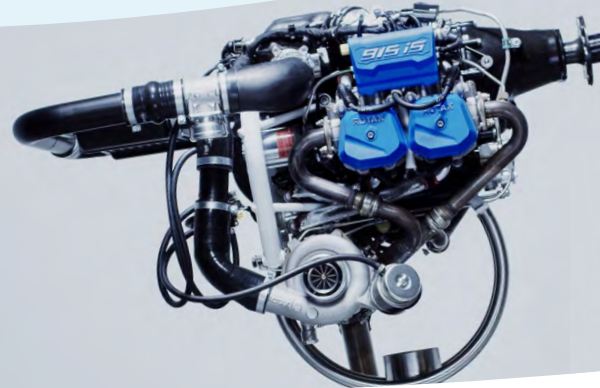
Its monocoque cabin is constructed from carbon composites, providing exceptional strength and durability. With integrated crumple zones, the cabin is designed to absorb impact energy in the event of a crash, prioritizing the safety of the pilot and passengers. This innovative construction mirrors the engineering principles utilized in Formula 1 cars, showcasing the high standards of safety and performance incorporated into the design of the Argon gyrocopter. Fly with confidence knowing that the Argon gyrocopter is crafted with precision and safety in mind.

### We manufacture passion

### The epitome of security in the Argon gyrocopters

is the factory-produced and certified **ROTAX 915** aviation engine. This high-quality engine comes equipped with dual power systems and advanced electronics, ensuring reliable performance and peace of mind during your flights. With a warranty of up to **5 years**, this engine guarantee provides comprehensive coverage wherever you are in the world, offering reassurance and support in the rare event of any issues. Trust in the **ROTAX 915** engine to power your adventures with confidence and reliability in every journey.

**ROTOR-Tech** composite rotor with High Energy characteristics, this rotor is built to be durable and reliable. Made from a carbon composite material reinforced with aramid Kevlar, it is not susceptible to the memory effect typically found in homogeneous materials. With a TBO (time before overhaul) of 2000 working hours, you can trust in the longevity and robustness of the rotor, ensuring a safe and secure flying experience in your Argon gyrocopter.



The landing gears of the Argon gyrocopter are constructed from aluminum, offering a sturdy and reliable foundation for safe landings.

Designed to absorb energy during hard landings, these landing gears effectively mitigate the impact forces, eliminating the spring effect that can pose a danger to the crew. By minimizing the risk of jolts and vibrations, the aluminum landing gears enhance the overall safety and stability of the landing process, ensuring a smooth and secure touchdown for the crew and passengers aboard the Argon gyrocopter.



The Argon gyrocopter features ergonomic seats inspired by the sleek design of McLaren, prioritizing both comfort and safety. These seats are engineered to offset spinal loads and promote the correct seating position, even during extreme phases of flight. With two seat designs available in sizes L and XL, you can select the option that best suits your needs. Additionally, you have the choice of more than a dozen upholstery patterns and colors, allowing you to customize your seating experience while enjoying both style and functionality in the ergonomic seats of the Argon gyrocopter.

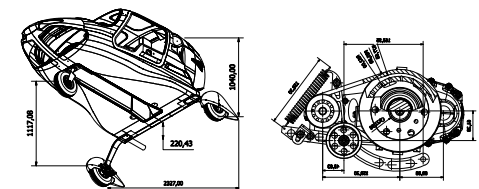


# argon

WE MANUFACTURE PASSION

Two-seater  
ultralight gyroplane


The ARGON brand stands as a beacon of quality in the realm of aircraft, particularly in the realm of two-seater ultralight gyroplanes. Praised for its high standards and ergonomic design, the ARGON gyroplane excels in providing ample interior space, headroom, and excellent cabin visibility. Among its various models, the ARGON 915 iS Classic reigns as a popular choice, boasting professional-grade craftsmanship that adheres to rigorous international regulations such as the British BCAR Section T benchmark. Equipped with all the luxurious amenities expected in a top-tier aircraft, the ARGON 915 iS Classic sets itself apart with superior aerodynamics, enabling it to achieve impressive cruising speeds of up to 180 km/h. This capability makes it an ideal choice for long-distance travel, offering both performance and comfort in equal measure. Demonstrating its exceptional quality and performance, the ARGON 915 iS Classic clinched the prestigious Grand Prix award for Best Gyroplane at the 2015 International Air Show in Oshkosh, USA, solidifying its reputation as a world-class aircraft in the gyroplane category.

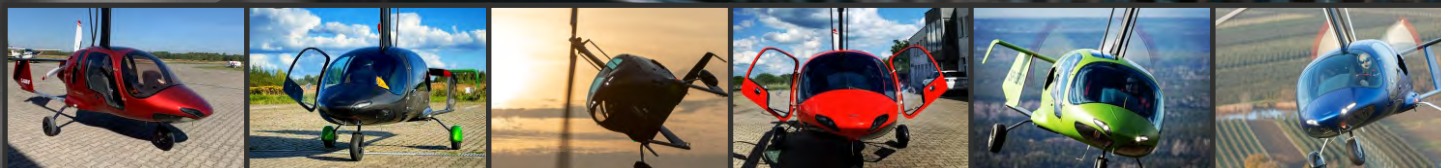


**GRAND CHAMPION AWARD FOR THE GYROPLANE  
AT AIRVENTURE OSHKOSH USA 2015**

The ARGON 915 Classic sets itself apart by providing a spacious cockpit that surpasses its competitors, prioritizing comfort and functionality for both the pilot and passenger.

With ample room and a thoughtful layout, the cabin offers a pleasant operating environment for the pilot and comfort for the passenger. Constructed from carbon composites in a monolithic design, the ARGON 915 Classic adheres to the rigorous safety standards set by the BCAR, ensuring top-tier safety features and robust construction that prioritize the well-being of those on board.

Specs	Model	
Cabin material	Carbon Fibre Monocoque	
Engines	ROTAX 915 iS	
Rotor	2 blades composite	
Maximum take off weight	600 kg	
Cruising speed	150-170 km/h	
Fuel type	Car fuel 95 -98 oct	
Max altitude	18000 ft	
Range	600 km	
Fuel quantity	85 l	
Take off distance	50 -100 m	
Landing distance	5 - 10 m	
Empty weight	295 kg (*)	
VNE	210 km/h	
Climb speed	1200 ft/m	
Rotor	Carbon Aramid 8,6m	



# argon

WE MANUFACTURE PASSION

**Engine** is the biggest feature

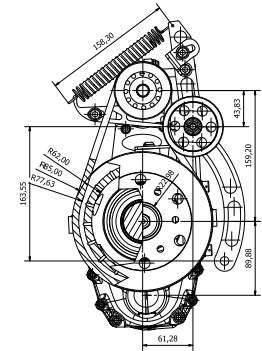


**Dynamic iS** engine with the best power-to-weight ratio, full take-off power of **141 HP** or **160 HP** and ceiling up to 23,000 ft (7 km).  
 Four-stroke piston engine with four water-cooled and air-cooled cylinders  
 Dual electronic injection and ignition system, eco mode  
 Turbocharger with stainless steel exhaust system  
 Dry sump forced lubrication with separate oil tank  
 hydraulic valve lash adjustment  
 Engine Management System (EMS)  
 Electric starter (12V and 24V)  
 Propeller speed reducer  
 Air intake system with intercooler



**Durability**

- service life of the ROTAX iS engine allows eight times circumnavigation of the Earth (**2000 flight hours**)

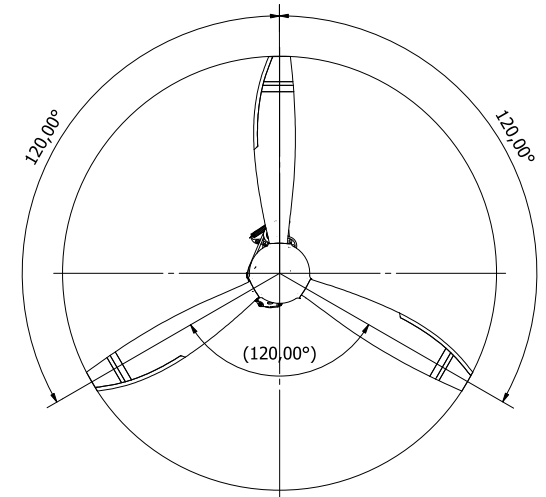
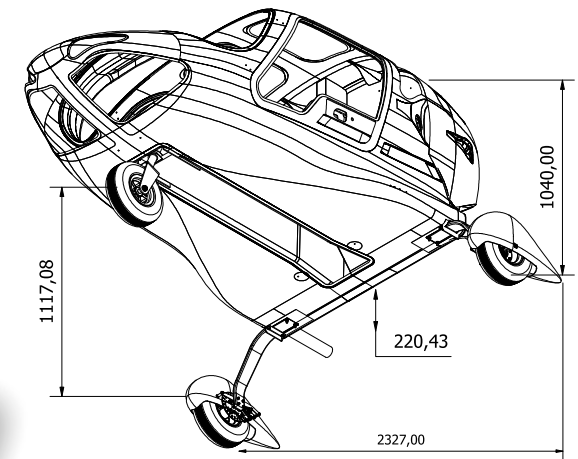


Up to **5** years warranty



**Economy**

- engine runs on regular fuel 95 or 98 octane automotive fuel ARGON requires less maintenance compared to with traditional aircraft. And the total cost of operation including resurfacing costs is only **\$35**.





*Manufaktura Lubnica*



**ARGON** 915

## The first really GRAND TURISMO LONG Gyroplane

The ARGON GTL sets a new standard for gyroplane travel, offering unparalleled flexibility and comfort for your journeys.

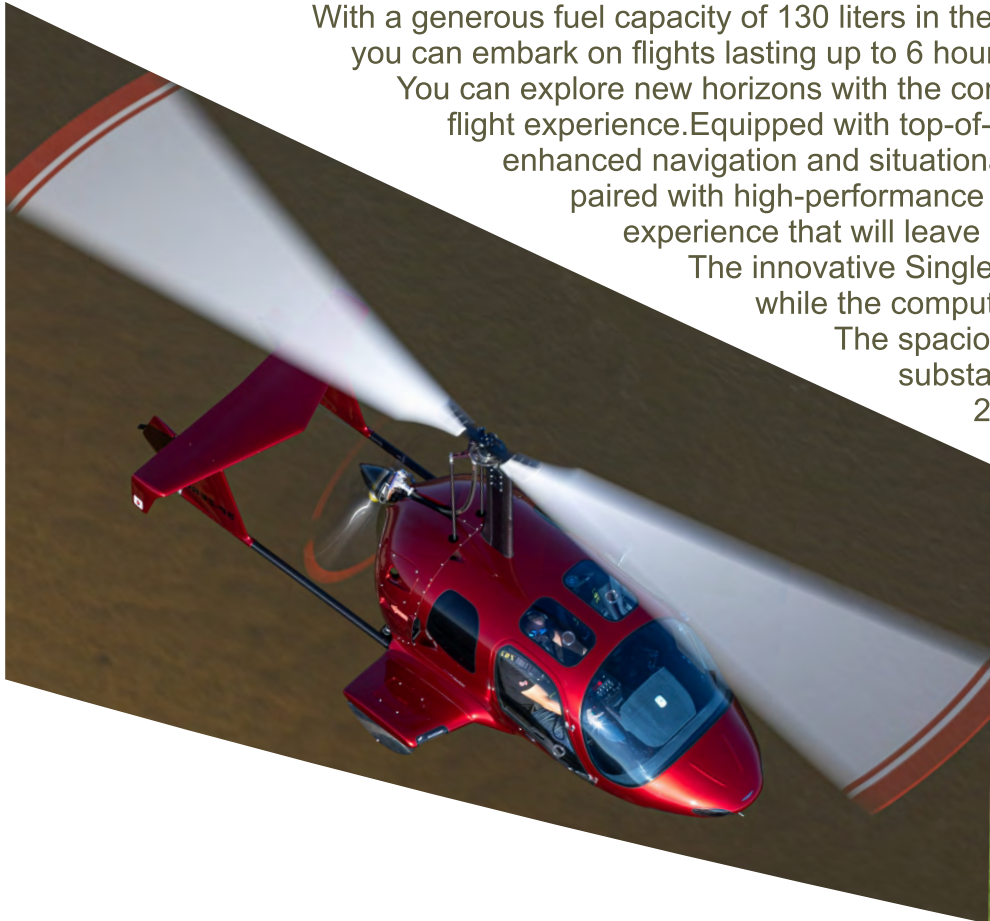
With a generous fuel capacity of 130 liters in the basic tanks and the option to add 80 additional liters in optional tanks, you can embark on flights lasting up to 6 hours without the need for refueling, covering more than 1,000 km in distance with ease.

You can explore new horizons with the convenience of an onboard autopilot system that ensures a comfortable and efficient flight experience. Equipped with top-of-the-line avionics from GARMIN, DYNON, and KANARDIA, the ARGON GTL provides enhanced navigation and situational awareness for your travels. The ROTAX 915 and ROTAX 916 engines, paired with high-performance propellers from WOODCOMP and MT Propeller, deliver a powerful and smooth flight experience that will leave a lasting impression on your passengers.

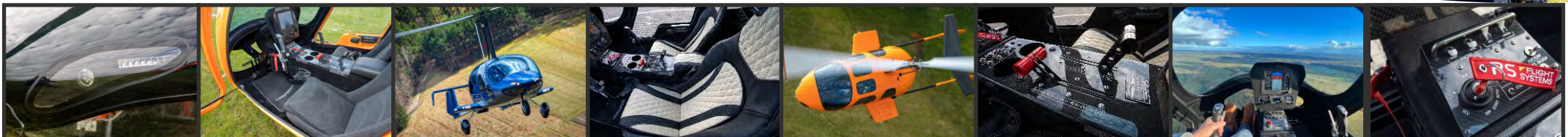
The innovative Single Lever Control system simplifies operation, allowing you to focus on the joys of flying while the computer-managed hydraulic governor handles propeller adjustments effortlessly.

The spacious interior of the ARGON GTL, larger than that of the classic ARGON 915, includes a substantial trunk with ample storage space. With dimensions of 5.45 meters in length and 2.45 meters in width, the ARGON GTL offers versatility and practicality, accommodating various items like golf clubs, skis, surfboards, fishing rods, foldable bicycles, and even full-size suitcases within its 1 cubic meter luggage space.

Now, with the world at your fingertips, you have the freedom to decide where your next adventure will take you. Enjoy the boundless possibilities that await as you take to the skies in the **ARGON GTL** for an unforgettable journey.



**argon**  
WE MANUFACTURE PASSION





*Manufaktura Lotnicza*



More than you expected

**ARGON** GTL

# ARGON

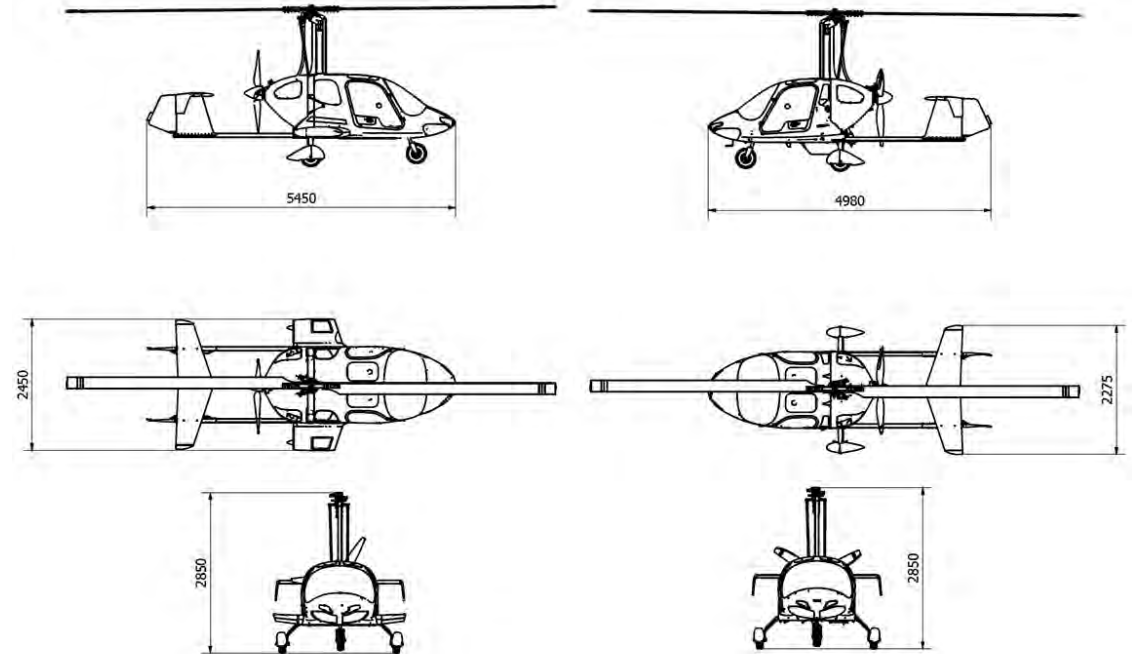
ROTAX 160 HP

ARGON **GTL** - available engine:  
 ROTAX 915 iS  
 ROTAX 916 iS



Up to **5** years warranty

The **ARGON GTL** is propelled by the dynamic and powerful **ROTAX 916** engine, boasting the best power-to-weight ratio in its class. With a robust full take-off power of 160 HP, this engine enables the gyroplane to reach impressive altitudes of up to 23,000 feet (7 km). Featuring a cutting-edge four-stroke piston design with four water-cooled and air-cooled cylinders, the engine is equipped with a dual electronic injection and ignition system, including an eco mode for improved fuel efficiency. Additionally, the ROTAX 916 engine incorporates a turbocharger combined with a stainless steel exhaust system to enhance performance and power delivery. Its dry sump forced lubrication system, complete with a separate oil tank, ensures reliable and consistent engine lubrication. The engine's hydraulic valve lash adjustment allows for precise tuning and maintenance. To streamline the engine's operation, an advanced Engine Management System (EMS) is in place, working alongside the electric starter system compatible with both 12V and 24V configurations. A propeller speed reducer further optimizes the engine's performance, while an efficient air intake system with an intercooler enhances overall operation and engine efficiency. With these advanced features and components, the ROTAX 916 engine powering the ARGON GTL delivers a superior flying experience marked by exceptional performance, reliability, and efficiency.



### Climbing

With a take-off weight of 560 kg (992 lbs.)

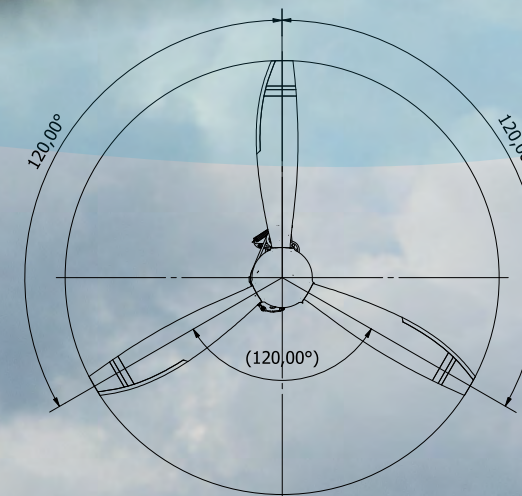
Engine	915 iS	
Climbing 1 person	7,1 m/s	1400 ft/m
Climbing 2 person	6,1 m/s	1200 ft/m
Practical ceiling	6000 m	19700 ft


With a take-off weight of 600 kg (1234 lbs.)

Engine	915 iS	
Climbing 1 person	6,1 m/s	1200 ft/m
Climbing 2 person	5 m/s	1000 ft/m
Practical ceiling	5500 m	18000 ft



*Manufakúra Látvány*



Specs	Model	
Cabin material		Carbon Fibre Monocoque
Engines		<b>ROTAX 916 iS</b>
Rotor		2 blades composite
Maximum take off weight		600 kg
Cruising speed		150-170 km/h
Fuel type		Car fuel 95 -98 oct
Max altitude		18000 ft
Range		900 km
Fuel quantity		130 l
Take off distance		50 -100 m
Landing distance		5 - 10 m
Empty weight		315 kg (*)
VNE		210 km/h
Climb speed		1200 ft/m
Rotor		Carbon Aramid 8,6m

**ARGON**

GTL

More than you expected

## Training



During the training, candidates for pilots acquire knowledge in the field of:

- Air Law regulations
- Aircraft knowledge
- Flight performance and planning
- Human capabilities and limitations
- Meteorology
- Navigation
- Operational procedures
- Principles of flight
- Communications and general flight safety



Indeed, while having a safe and reliable aircraft is crucial, the comfort and success of any flight also heavily depend on the training and preparedness of the pilot. In recognition of this, we place a strong emphasis on providing professional training to aspiring pilots. Our training program includes the following conditions for candidates: Age requirement: Candidates must be at least 16 years old to begin their aviation training. Aviation medical certificate: Possession of a valid aviation medical certificate demonstrating fitness for flight is essential. Education requirement: A minimum of secondary school education or its equivalent is necessary for enrollment in our training program. By meeting these criteria, individuals can embark on an exciting adventure in aviation through our training center. Our comprehensive programs are designed to equip pilots with the knowledge, skills, and confidence needed to operate aircraft safely and effectively. If you meet these requirements and are passionate about pursuing a career in aviation, we welcome you to join us and start your journey towards becoming a skilled and proficient pilot.



Theoretical training lasts 80 hours, and practical training includes 25 hours under the guidance of the most experienced instructors on the best machines on the market.

Pilots with previous aviation experience theoretical preparation is shortened and individually determine the number of hours to spend in the air.

The cost of training is relatively low.

The course ends with an exam after which one obtains a Ultralight pilot qualification certificate.



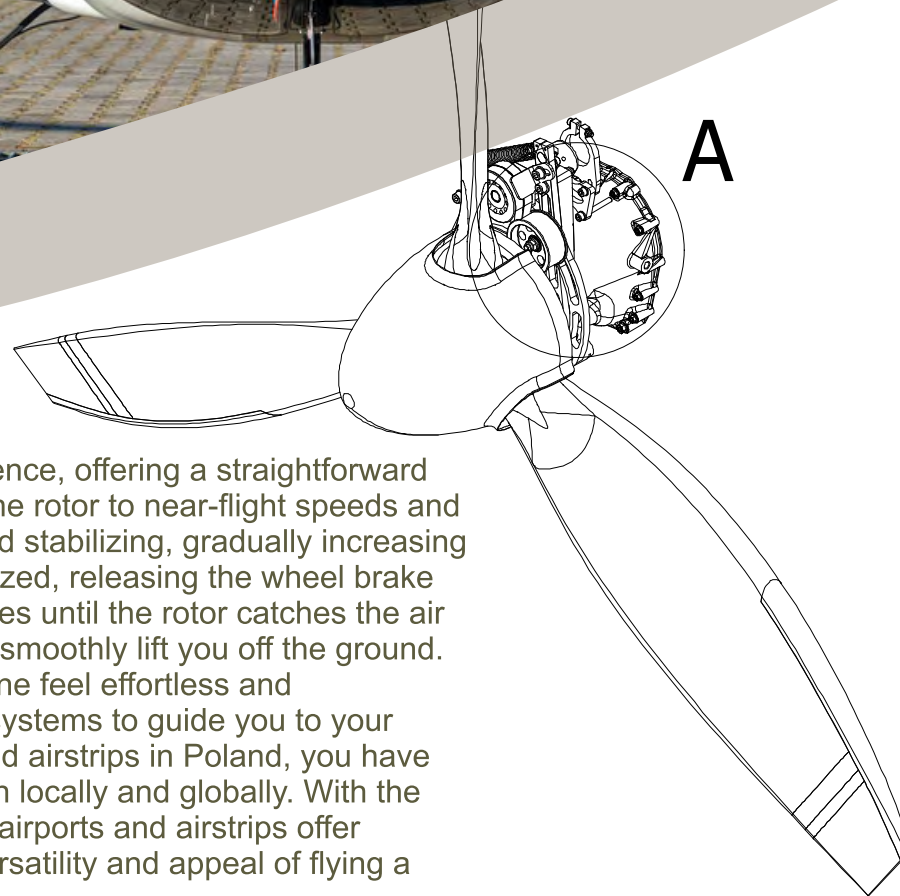




## Tailor made

Personalization is key when it comes to choosing an aircraft that fits your unique preferences and requirements. With our models, each gyroplane interior can be tailored to cater to your individual needs. You have the freedom to customize various aspects such as upholstery, seats (including size and shape), avionics, cockpit color (even metallic finishes), heating options, communication systems, and numerous other elements. This customization ensures that your gyroplane is perfectly aligned with your expectations and requirements. To simplify the process of selecting equipment elements and customizing your gyroplane, we offer an online configurator on our website at [www.argo.aero](http://www.argo.aero). This tool allows you to conveniently explore and choose from a range of options, enabling you to create a personalized aircraft that meets your exact specifications. With the online configurator, designing your dream gyroplane becomes a seamless and enjoyable experience, ensuring that the final product is tailored precisely to your liking.

Ready to fly... take off :)



Flying a Gyroplane is indeed a unique and exciting experience, offering a straightforward and intuitive control process. Picture this: as you spin up the rotor to near-flight speeds and reduce the run-up time, the rotor responds by stiffening and stabilizing, gradually increasing lift in a controlled manner. With the rotor primed and stabilized, releasing the wheel brake sets you in motion. As you add power, the run-up accelerates until the rotor catches the air currents, allowing the lifting force to overcome gravity and smoothly lift you off the ground. This smooth and progressive liftoff makes flying a Gyroplane feel effortless and natural. Once airborne, you can rely on built-in navigation systems to guide you to your desired destination. With a network of over 600 airports and airstrips in Poland, you have the flexibility to explore and travel to various locations, both locally and globally. With the necessary permissions from the respective owners, these airports and airstrips offer convenient access points for your travels, adding to the versatility and appeal of flying a Gyroplane for both leisure and practical purposes.

# Three People on board





SP-YAH



Manufaktura Lotnicza is pioneering a new approach to the delivery and operation of safe, modern private lightweight and ultralight Gyroplanes and Helicopters Each model can be configured according to your individual needs. You can choose the color (including metallic) avionics, heated seats, means of communication and many other elements, thanks to which your aircraft will meet all your expectations.  
The decision on the selection of equipment elements will be



# ARGO HELICOPTERS



# ARGO

ARGO AH4.5

ARGO  
ARGO AH3.4

N 323-2K

# ARGO AH2.2

Two Seater

helicopter 600 kg MTOW




- automatic governor with RPM correlator
- full cowlings with big luggage compartment
- UL Power aviation engine
- glasscockpit avionics GARMIN GX3
- 3 axis autopilot
- modern luxury interior
- High Inertia Carbon Rotor peaceful 100% autorotation
- new modern instruments panel
- heater oil/water exchanger



ULPower engines have been developed specifically for use in light aircraft. Manufactured to the highest standards, the engines have a fully electronic ignition and a multi-point fuel injection system (FADEC). The engines are equipped with dual electronic ignition (with variable phases), dual fuel system and a forced cooling system. ULPower has an excellent power-to-weight ratio and high fuel efficiency. ULPower has an excellent power-to-weight ratio and high fuel efficiency in conventional configuration: air-cooled, direct-drive drive, boxer 4 or 6-cylinder.





Specs	Model	
Cabin material	Titanium/composite	
Engines	ULPower 160 KM	
Rotor	Composite HI 3 lopatowy	
Maximum take off weight	600 kg	
Cruising speed	180 km/h	
Fuel type	Car fuel 95 -98 oct	
Max altitude	15 000 ft	
Range	600 km	
Fuel quantity	90 l	
Take off distance	0 m	
Landing distance	0 m	
Height	2,60 m	
Length	6,50 m	
Width	2,25 m	
Rotor	8,0 m	

The ARGO AH2.2 has a three-blade nose rotor, which guarantees incredible stability in flight and excellent climb - up to 15 m/s. Thanks to its lightweight composite construction, it is quiet and thanks to its modern Ulpower aircraft engine with 150 hp, it can reach speeds of up to 180 km/h. It is incredibly maneuverable and rigid - the equivalent of a high-performance sports car. Its excellent performance, and semi-rigid rotor design allow it to achieve excellent results.



## MAKE **NEW** DISCOVERIES



Manufaktura Lotnicza is pioneering a new approach to providing and operating safe, modern private lightweight and ultralight helicopters.

The ARGO AH-22 has enough space to take two people on board.

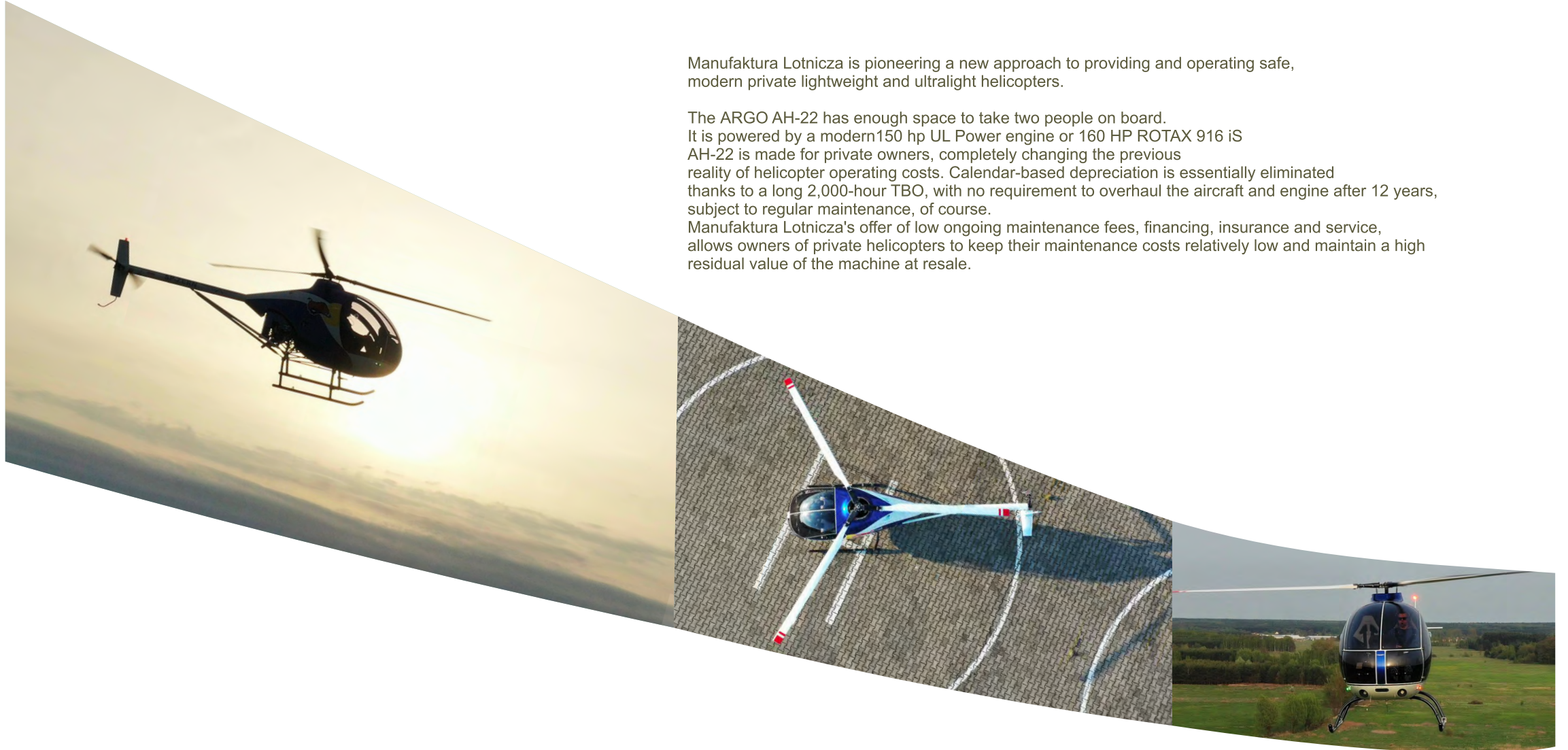
It is powered by a modern 150 hp UL Power engine or 160 HP ROTAX 916 iS

AH-22 is made for private owners, completely changing the previous

reality of helicopter operating costs. Calendar-based depreciation is essentially eliminated


thanks to a long 2,000-hour TBO, with no requirement to overhaul the aircraft and engine after 12 years, subject to regular maintenance, of course.

Manufaktura Lotnicza's offer of low ongoing maintenance fees, financing, insurance and service, allows owners of private helicopters to keep their maintenance costs relatively low and maintain a high residual value of the machine at resale.



The **ARGO** AH-22 features a semi-rigid three-blade main rotor that guarantees incredible stability in flight, its shape gives low aerodynamic drag. Thanks to its lightweight composite construction, it is quiet. Thanks to its modern ROTAX or UL Power aircraft engine with 160 hp, it can reach speeds of up to **210 km/h**.



Specs	Model	
Cabin material	Titanium/composite	
Engines	ULPower 160 KM	
Rotor	Composite HI 3 lopatowy	
Maximum take off weight	600 kg	
Cruising speed	180 km/h	
Fuel type	Car fuel 95 -98 oct	
Max altitude	15 000 ft	
Range	600 km	
Fuel quantity	90 l	
Take off distance	0 m	
Landing distance	0 m	
Height	2,60 m	
Length	6,50 m	
Width	2,25 m	
Rotor	8,0 m	

WE **MANUFACTURE** PASSION



## ARGO AH 2.2

### Two-seater Light Helicopter

This is an innovative design in the VLR category of light helicopters,

**ARGO AH 2.2** has enough space to take two people and their carry-on luggage on board. It is powered by a modern UL-Power 160 hp engine or a ROTAX 916 iS. It features a unique Multilayer Monolithic Composite Cabin protected by an international Class **A1 patent**. Powered by automotive fuel, it is a leader in terms of economy. It is perfect for the whole family or business.



ARGO AH-2.2 has a three-blade semi-rigid main rotor, which guarantees incredible stability in flight, its shape gives low aerodynamic drag. Thanks to its lightweight composite construction, it is quiet a thanks to its modern hybrid engines with a total power of 160 HP. Can reach up to 210 km/h cruise speed.



The engine is the most important, it is light and, powerful, designed as an aircraft engine with all systems doubled, it runs at a low speed of 3200- 3500 RPM, for a long life. Belts transmission, we have used drive belts from Robinson, proven and long life.

Another key factor is the engine fairing, airflow tests in the wind tunnel showed large disturbances forming behind the helicopters without engine cowlings, which limited speed and caused shimmying at higher speeds. The narrow engine fairing integrated into the cabin and large luggage compartment is a step forward. Main rotor, blades made of carbon fiber with the center of gravity distributed toward the blade tip, the so-called High Inertia rotor, making autorotation much easier and safer, the blades have a leading edge made of metal. Also worth mentioning is the adjustable speed controller (governor), which works integrated with the mechanical correlator with possible power adjustment in the range of 300 RPM .Nice interior and modern avionics built into the ergonomic instrument panel.

Integrated active safety systems strobe lights that work together with the FLARM Airborne Warning System. New composite bucket ergonomic seats, premium leather and alcantara trim materials and GARMIN with 3-axis autopilot complete the package.





[www.argo.aero](http://www.argo.aero)

**WE MANUFACTURE PASSION**

Manufaktura Lotnicza Sp. z o.o. • Lotnisko EPSJ - Warszawa Polska tel +48 660 57 57 57